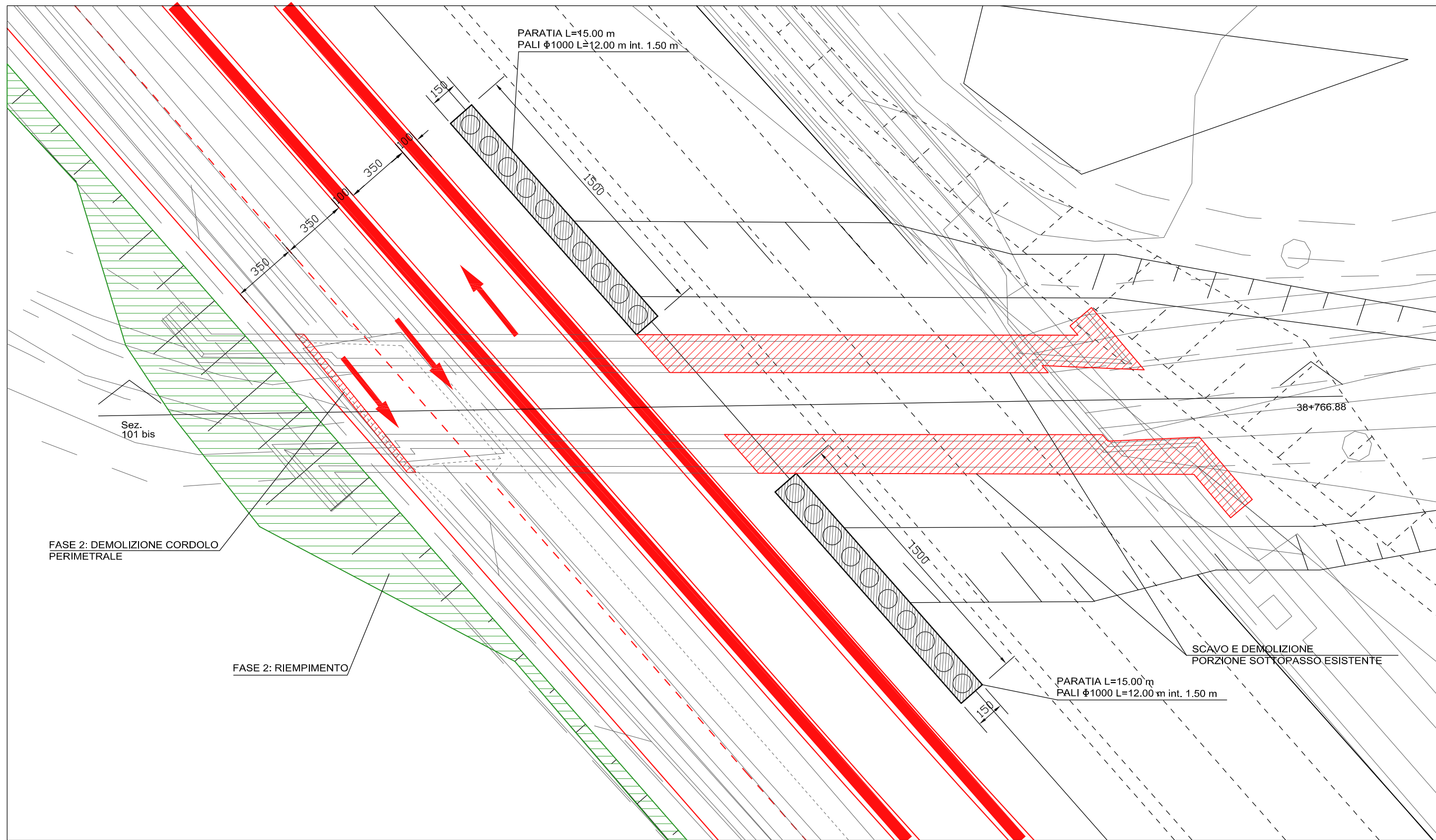
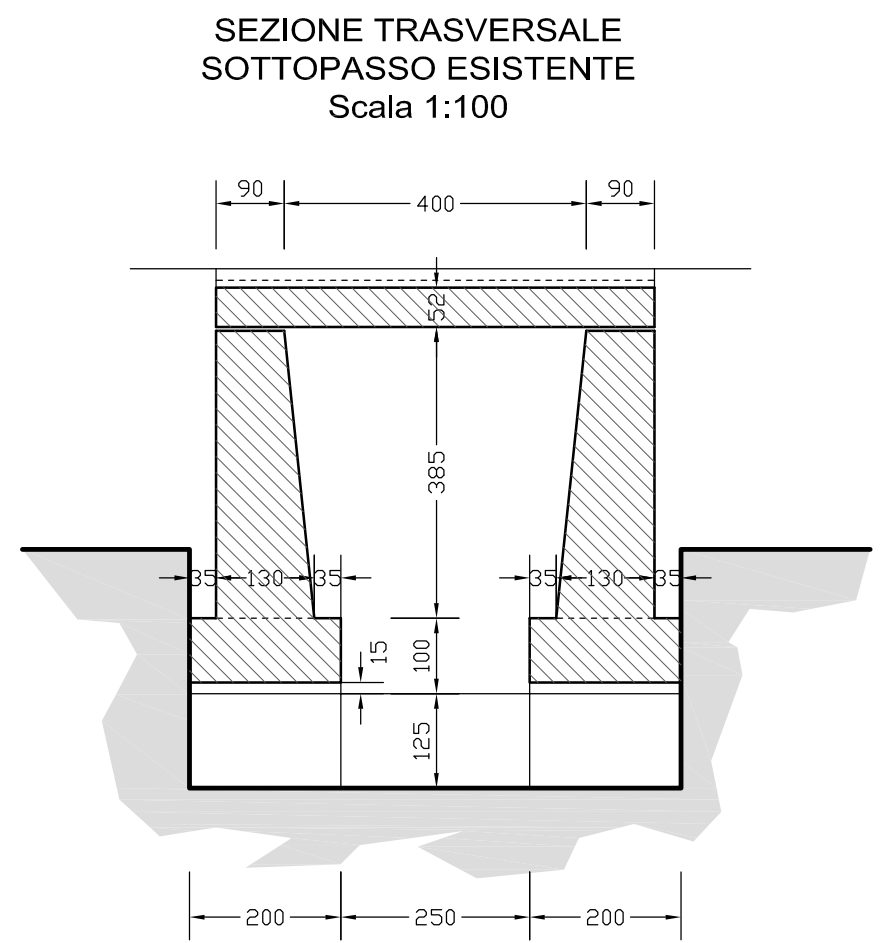
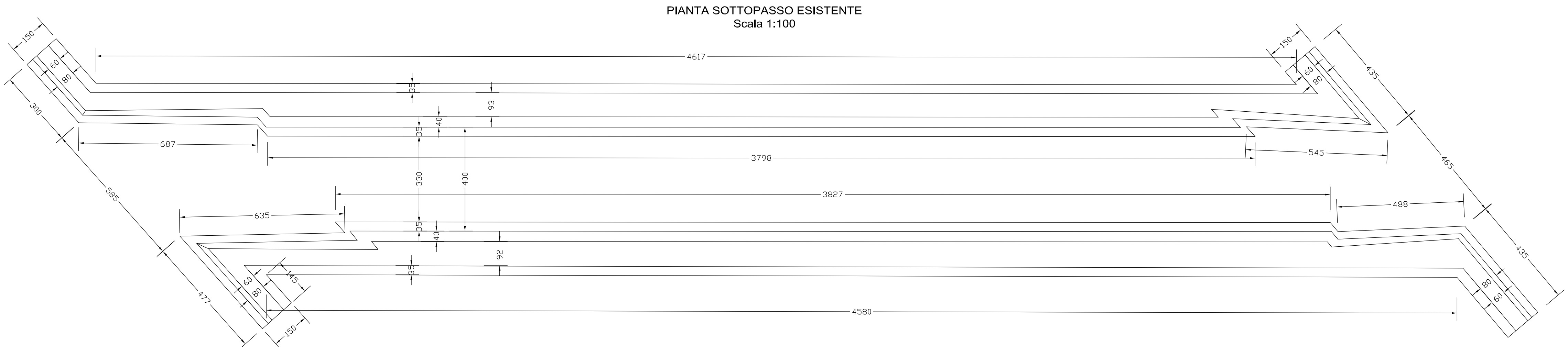
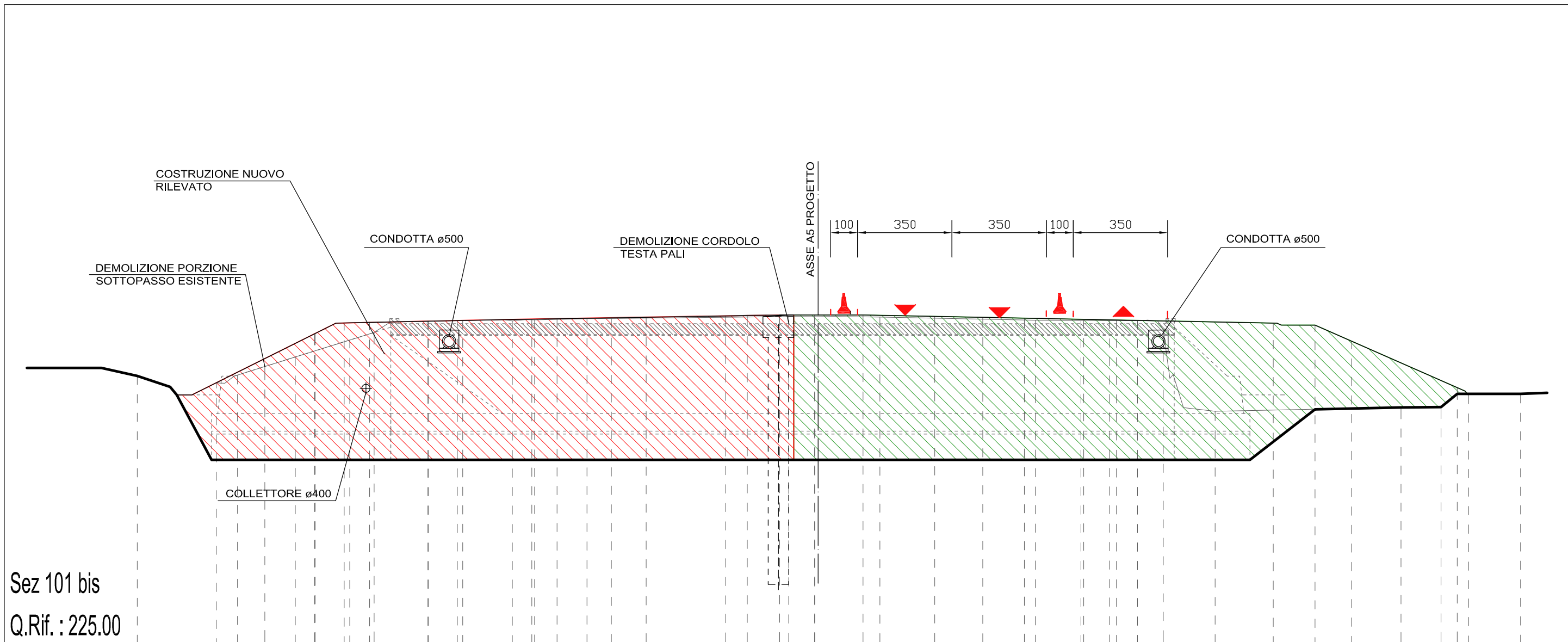
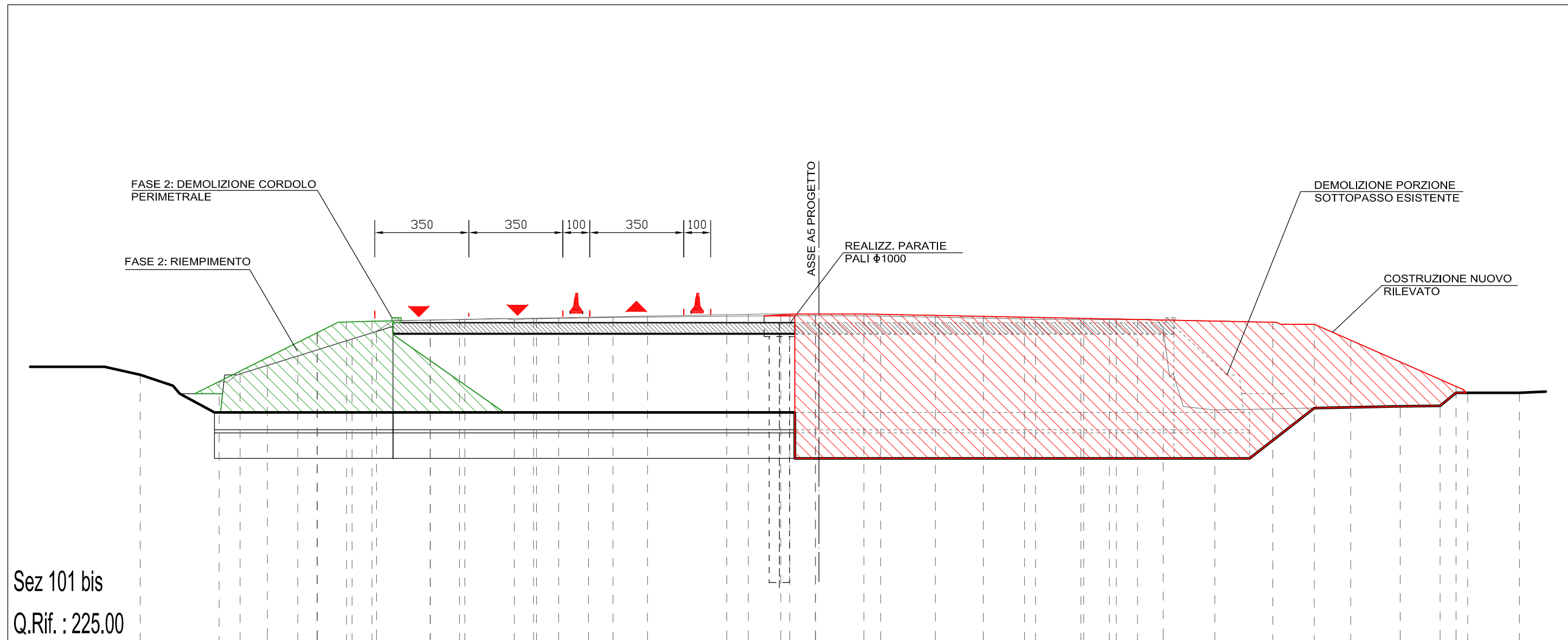
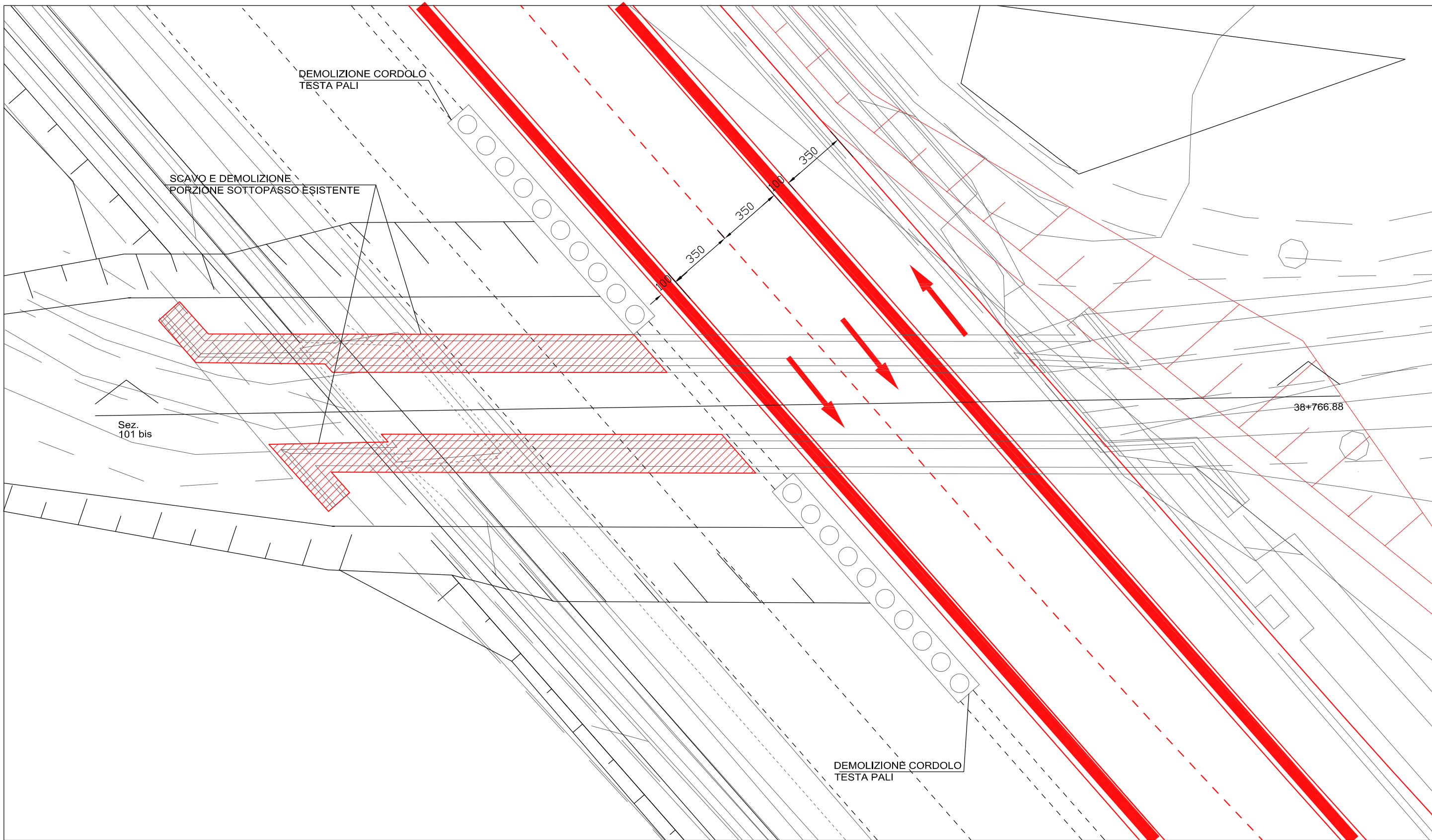



FASE 4




FASE 6





TORINO - IVREA - QUINCINETTO
IVREA - SANTHIA'
SISTEMA AUTOSTRADALE
TANGENZIALE DI TORINO



VISTO per ATIVA S.p.A.
Amministratore Delegato
Dott. Ing. LUIGI CRESTA

**AUTOSTRADA A4/A5 - A5 TORINO QUINCINETTO
IVREA SANTHIA'**

**NODO IDRAULICO DI IVREA
2° FASE DI COMPLETAMENTO**

PROGETTO DEFINITIVO

**PARTE STRUTTURALE - SOVRAPPASSI E SOTTOPASSI
DEMOLIZIONE SOTTOPASSO STRADA VICINALE
AL km 38+767
DISEGNO D'INSIEME**

IL PROGETTISTA	REDATTO	CONTROLLATO	APPROVATO
 Il Direttore Tecnico Dott. Ing. ROBERTO PETRALI ordine degli Ingegneri di Milano n° 14639	IGEAS E. De Curti	IGEAS M. Barale	ATIVA ENGINEERING V. Palmisano
DATA GIUGNO 2012	REVISIONE	DATA	
SCALA 1:200			
UPPRO	CONFERMA	IN PROG.	IN ARB.
SSP0101A0500PDSTR40600-			